



CENTURIES
of SPLENDOR

FINE ART, JEWELS & RARITIES

M.S.  *Rau*



Roman Empire Mosaic Table

An exquisite objet d'art from antiquity, this mosaic originally decorated a Roman villa wall, specially commissioned to depict a charioteer of the elite blue faction. Now mounted on its 19th-century iron base, this table transforms ancient history into a stunning work of art. Circa 3rd century CE. 30¹/₈"h x 38³/₈"w x 38³/₄"d.

#31-6985 | \$248,500

CENTURIES *of* SPLENDOR

FINE ART, JEWELS & RARITIES

For 112 years, M.S. Rau has proudly united exceptional works of art with passionate collectors worldwide. We hope that the missing crown jewel of your collection awaits in this thoughtfully curated selection of fine art, antiques and jewelry.

From a rare 3rd-century Roman mosaic to a resplendent landscape by Post-Impressionist master Achille Laugé, this catalog features an astounding breadth of masterful canvases, rare gemstones, one-of-a-kind timepieces and much more by history's greatest artists and makers.

Thank you for your continued trust in our expertise as we help build perfectly tailored, world-class collections. If you discover something of interest, do not hesitate to contact your personal sales consultant.

ENHANCE YOUR EXPERIENCE

Look for these codes to learn more
about an item or to view a video





JOHN WILLIAM GODWARD

1861-1922 | British

At the Window

Dated 1920 | Oil on canvas

Signed and dated "J.W. Godward 1920" (lower right)

Celebrated as one of the three most important Neoclassical painters at the turn of the century, John William Godward masterfully imbued his elegant subjects with an otherworldly luminosity and sensuality. *At the Window* is quintessential of his oeuvre, with a classical beauty gazing out of an opulent marble windowsill in quiet reflection.

The leading protégé of Sir Lawrence Alma-Tadema, Godward quickly adopted and rivaled the style of his esteemed predecessors, using far greater precision and detail. His alluringly lifelike maidens in their breathtaking settings transported viewers to a bygone era of classical serenity, earning him widespread popularity and critical acclaim during his lifetime and beyond.

Canvas: 31½" h x 16" w | Frame: 42¾" h x 27⅛" w

#31-7067 | \$298,500



Scan to view
the dossier

VISIONARY VIRTUOSO

A beautiful work of art dazzles the eye, but a masterpiece enralls the mind and transports the viewer into its world. M.S. Rau is honored to present the following collection of exceptional, museum-quality fine art that exerts an irresistible pull on our senses and displays the visionary genius of history's greatest artistic talents.



SIR WINSTON CHURCHILL

1874-1965 | British

Riviera Scene

Circa 1930 | Oil on canvas board
Signed "Riviera Scene / W.S.C." (en verso)

Immediately recognizable as one of the most important statesmen in world history, Sir Winston Churchill also cultivated his talent for painting for more than 40 years. *Riviera Scene* stands out as an exceptional masterpiece among his body of work, with the lush French landscape glowing with a joyous sense of color and light.

Throughout the 1920s and 1930s, Churchill often withdrew to the French Riviera, and the stately residence of Viscount Rothermere, where this landscape was painted, was one of his favorite retreats. *Riviera Scene* was later gifted from Churchill to George Huntington Hartford II, the heir to the A&P supermarket fortune, and it was also prominently displayed at the 1965 New York World's Fair. Churchill left the vast majority of his works unsigned, making this composition by the great Prime Minister even more special.

Canvas: 18¹/₈"h x 26¹/₄"w | Frame: 26⁵/₈"h x 34³/₄"w

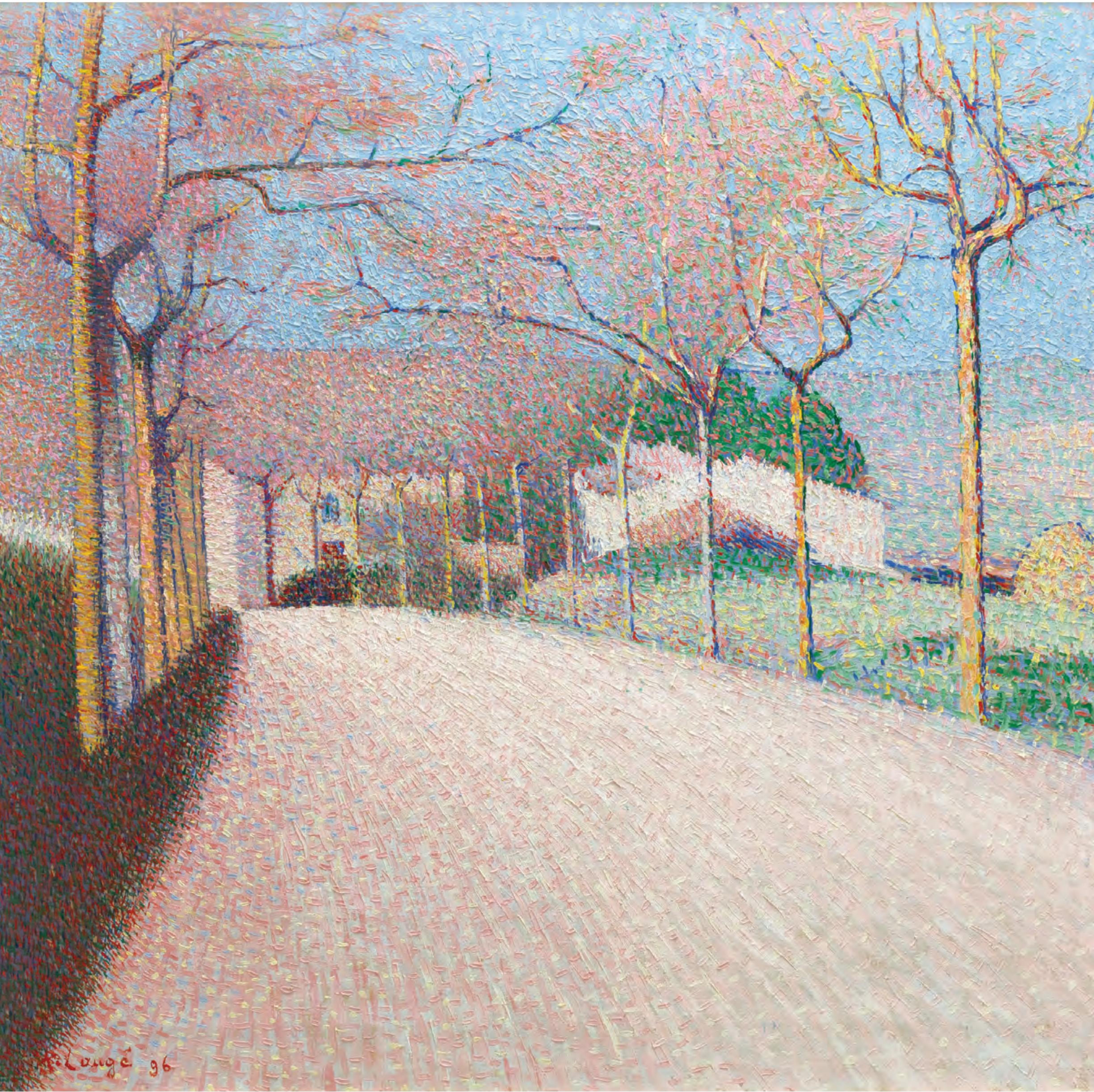
#31-8126 | \$2,850,000



Scan to view
the dossier









ACHILLE LAUGÉ

1861-1944 | French

The Garden Near Cailhau

Dated 1896 | Oil on canvas

Signed "A. Laugé 96" (lower left)

This incredible work by Achille Laugé showcases the masterful artist at his ultimate, painted in 1896 at the height of his career. Marked by a luminous color palette and a virtuosic command of the pointillist technique, *The Garden Near Cailhau* is the finest of Laugé's output, and the canvas remains in a pristine unlined state.

For an artist who preferred to paint quietly out of the public eye and in the beautiful tranquility of his native Cailhau, Laugé is firmly recognized as a pivotal Neo-Impressionist painter, as talented as giants such as Seurat and Signac. Laugé's works are held in many major museums, including the Musée d'Orsay, the Louvre and the Museum of Fine Arts, Houston. *The Garden Near Cailhau* is even grander than the work at the Musée d'Orsay, and it is larger with a far more spectacular palette than the work at the Museum of Fine Arts, Houston. This painting is the unequivocal masterpiece of Laugé's landscapes, epitomizing his longstanding reputation as "the master of light."

Canvas: 25¹/₂"h x 32"w | Frame: 31¹/₂"h x 37⁷/₈"w

#31-8276 | \$985,000



Scan to view
the dossier





Illuminated Manuscript

Early 16th Century | Oil on panel

Extraordinary in its technique and rarity, this exceptional painting of an illuminated manuscript displays an astounding *trompe l'oeil* effect and is one of only 17 known works of its kind. The lavishly decorated manuscript emerges from the dark background in masterful splendor, its fluttering pages almost palpably lifting off the panel.

By the time this work was created, the widespread use of the printing press had transformed Europe and made the illuminated manuscript, with its expensive, labor-intensive process, an obsolete objet d'art. Likely specially commissioned, these manuscript paintings were romantic depictions of a bygone art form.

The other few manuscript paintings of this kind reside in public and private collections around the globe, including the impressive collections of Eltz Castle in Germany and Ambras Castle in Austria.

Panel: 18”h x 20¹/₄”w | Frame: 25”h x 27⁵/₈”w

#31-6844 | \$648,500



MONTAGUE DAWSON

1890-1973 | British

The Pioneer, The Nonsuch

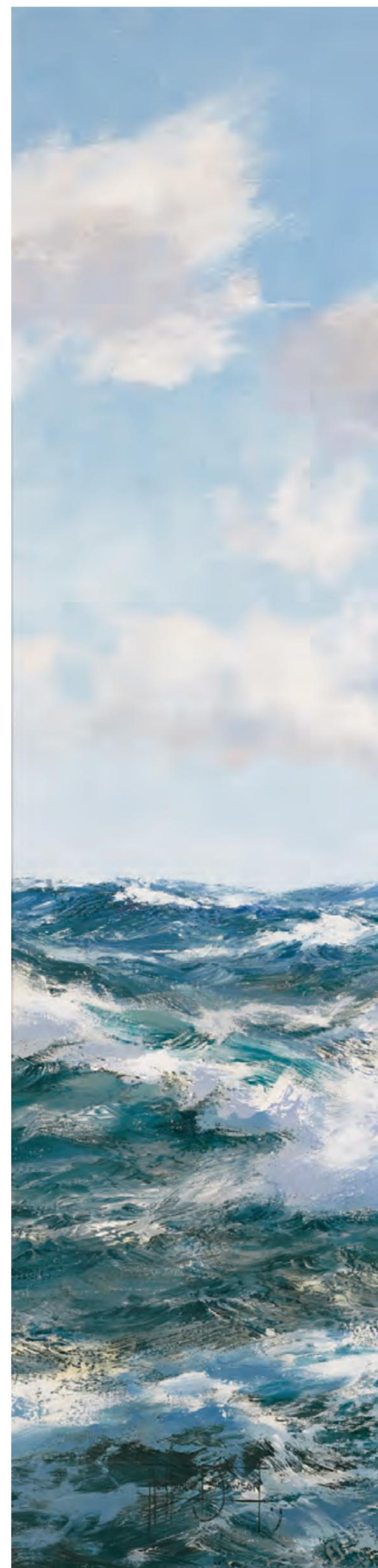
Early 20th Century | Oil on canvas
Signed "Montague Dawson" (lower left)

Montague Dawson, the most important maritime painter of his generation, brings to life the dynamism of the seas and the mighty clipper ships that brave their waters in this monumental work. The historic ketch ship *The Nonsuch* is magnificently illuminated by relentless sunlight as it battles the churning waves. Dawson's masterful technique renders an array of textures in lifelike detail, from the misty spray of the sea foam to the translucent fabric of the sails to the cottony billows of the clouds.

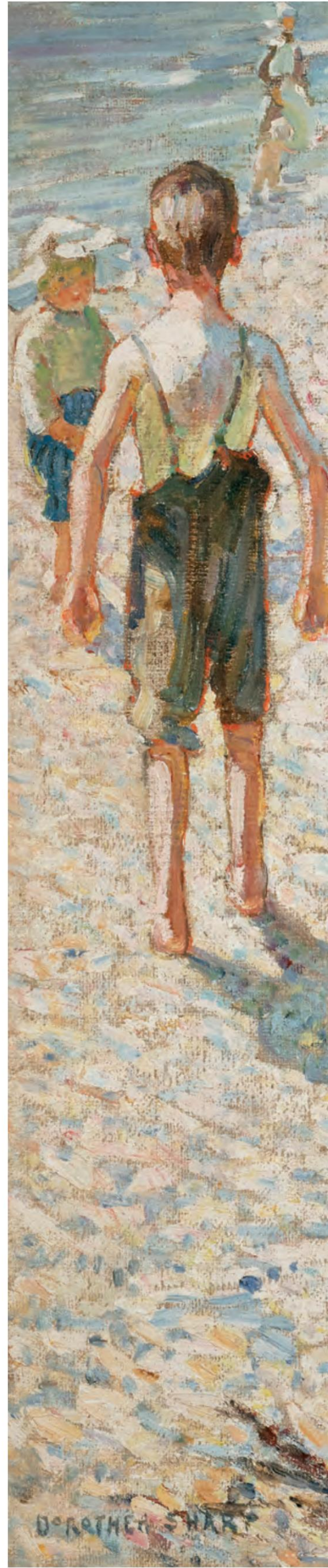
The son of a keen yachtsman and grandson of marine painter Henry Dawson, Montague Dawson quickly revealed his virtuoso in maritime painting. After World War I and his time in the Royal Navy, Dawson dedicated himself fully to his art, exhibiting regularly at the Royal Society of Marine Artists and the Royal Academy from 1917 to 1936. By the 1930s, he was considered the greatest living marine painter, and his illustrious patrons included two American presidents, Dwight D. Eisenhower and Lyndon B. Johnson, and the British Royal Family.

Canvas: 40"h x 50"w | Frame: 46⁷/₈"h x 56³/₄"w

#31-7335 | \$298,500







DOROTHEA SHARP

1874-1955 | British

A Day on the Beach

Early 20th Century | Oil on canvas
Signed "Dorothea Sharp" (lower left)

Renowned for her enchanting paintings of women and children, Dorothea Sharp is counted among the most popular painters of the modern British era. *A Day on the Beach* is an exceptional example of her idyllic output, with her young subjects embodying the carefree innocence of youth. Sharp's energetic brushstrokes add unique vitality to this luminous beach scene.

Though she did not begin painting until the age of 21, Sharp quickly honed a distinct style during her studies in England and Paris, where she first discovered and was deeply impacted by the work of Claude Monet and the Impressionists.

She exhibited frequently at the Royal Academy beginning in 1901 until just a few years before her death, and she had her first major solo show in 1933. This exhibition was such a success that she was lauded at the show as "one of England's greatest living woman painters" by *The Artist* editor Harold Sawkins.

Canvas: 40"h x 45"w | Frame: 47"h x 52"w

#31-8316 | \$298,500





JEAN-PIERRE CASSIGNEUL

b. 1935 | French

Le bouquet dans les bras

Dated 2019 | Oil on canvas

Signed "Cassigneul" (lower right) and
"Le bouquet dans les bras / Cassigneul / 2019" (en verso)

A bold celebration of color and glamour, this dynamic portrait is a testament to celebrated French artist Jean-Pierre Cassigneul's command of bold color, rich impasto and alluring drama. The artist's signature sophisticated beauty is rendered here in profile, her delicate complexion contrasting with the intensity of the deep blue background and her colorful bouquet.

One of the most popular living French artists, Cassigneul is set apart by his unique ability to produce works that feel both dramatically contemporary and timeless in style. His grandfather was the founder of the groundbreaking French fashion house Jean Dessès, and the glamorous Parisian fashion world had a profound influence on his artistic style. Cassigneul held his first one-man exhibition at just 17 and has since been widely exhibited throughout the world, particularly in Western Europe, the United States and Japan.

Canvas: 36¹/₄"h x 28⁷/₈"w | Frame: 45⁷/₈"h x 38⁵/₈"w

#31-6431 | \$248,500





RUBALDO MERELLO

1872-1922 | Italian

Monastery Complex with Statue of Maria

Late 19th / Early 20th Century | Oil on canvas
Signed "Merello R." (lower right)

Thousands of precise dots of paint make up this stunning mountainside landscape by celebrated Italian Neo-Impressionist Rubaldo Merello. Influenced by the French Pointillists, Merello masterfully wielded this painterly technique to create luminous compositions that captured the physical beauty as well as the spiritual depth of his beloved home.

The most important artist to emerge from Italy's northern Liguria region, Merello established his own studio in Genoa in 1892 and began exhibiting and selling his works widely. Though he lived in relative isolation after the turn of the century in small medieval villages along the Ligurian coast, Merello left an indelible mark on the artistic legacy of this region. The Musei di Genoa hosted a major retrospective of the artist's work at the Palazzo Ducale in 2017, entitled *Rubaldo Merello: Between Divisionism and Symbolism*.

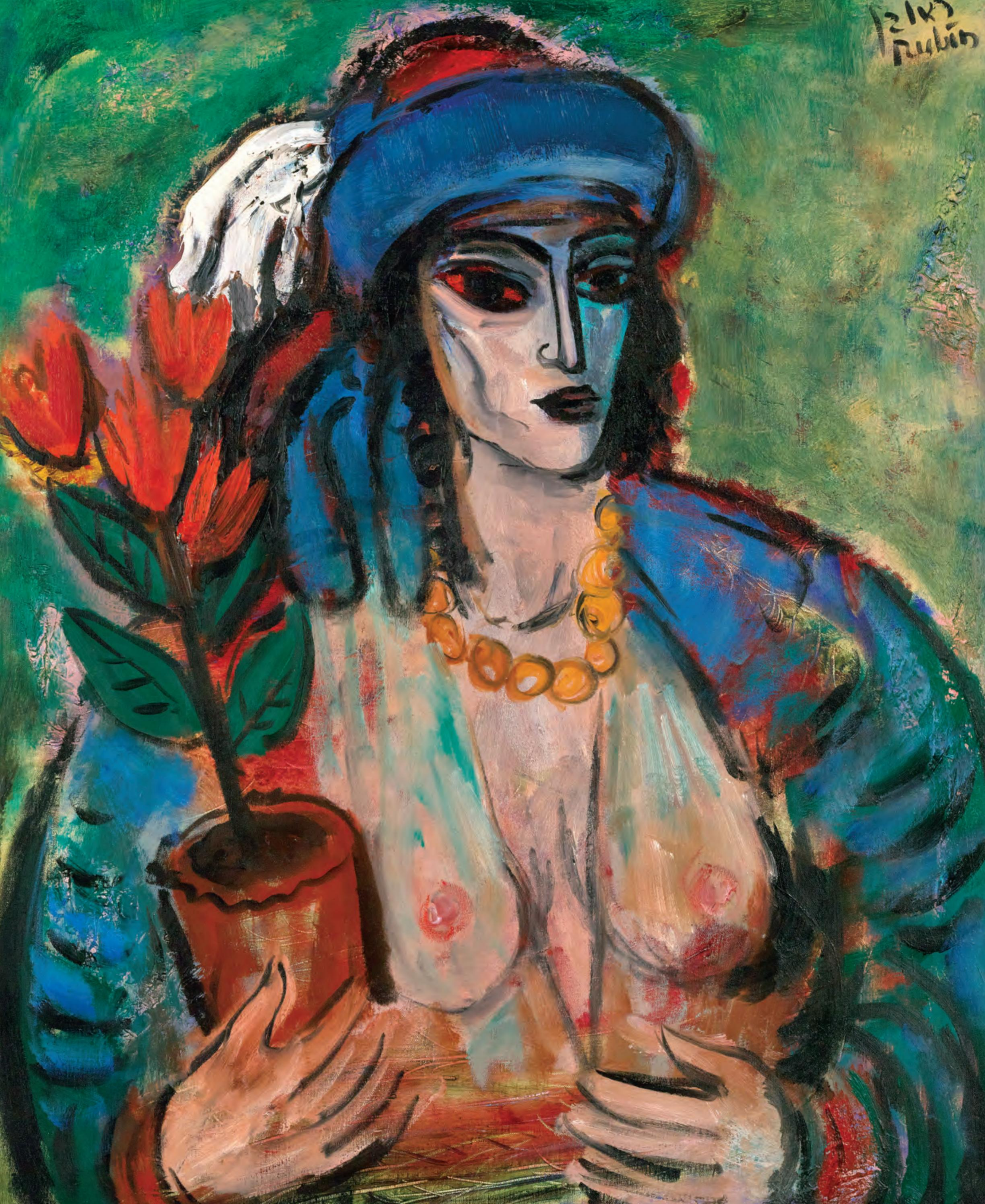
Canvas: 35¹/₄"h x 52¹/₄"w | Frame: 45"h x 62¹/₄"w

#31-8042 | \$228,500





12143
Rubin





REUVEN RUBIN

1893-1974 | Israeli

Orientala

20th Century | Oil on canvas
Signed "Reuven Rubin" (upper right)

A striking work rendered in a breathtaking jewel-toned palette, *Orientala* by Reuven Rubin showcases the dynamic artistry and distinctive stylistic vision of the famed Israeli artist. Known for his depictions of his home landscape and its inhabitants, Rubin imbued his subjects with an alluring, dreamlike quality. The sitter at the center of this expressive portrait radiates with an enigmatic air, created by Rubin's masterful use of strong brushwork and vivid color.

Celebrated as an important pioneer, Rubin is one of the first Israeli artists to achieve international recognition and acclaim. In 1924, he was the first artist to hold a solo exhibition at the Tower of David in Jerusalem, and that year he was elected chairman of the Association of Painters and Sculptors of Palestine. Today, Rubin's works are included in the collections of many major museums, including the Museum of Modern Art in New York.

Canvas: 32"h x 26"w | Frame: 44"h x 37³/₈"w

#31-8230 | \$228,500



J.C. LEYENDECKER

1874-1951 | American

*The Sleuth, for the cover of *The Saturday Evening Post**

Circa 1906 | Oil on canvas

Signed "JC Leyendecker" (lower left)

This captivating painting by famed American illustrator J.C. Leyendecker was made for the June 2, 1906 cover of *The Saturday Evening Post*. Leyendecker's masterful illustration entitled *The Sleuth* draws the viewer in to the debonair detective's world, showcasing the artist's renowned skill for capturing character and narrative intrigue in just a single scene.

Leyendecker is credited with some of the most beloved and endearing images of his era that defined the American visual lexicon for decades. In 1898, Leyendecker produced the first of 48 covers for *Collier's* magazine and would go on to work with *The Saturday Evening Post* for 44 years. His extensive oeuvre influenced an entire generation of young artists, most notably the great Norman Rockwell, who served as a pallbearer at Leyendecker's funeral.

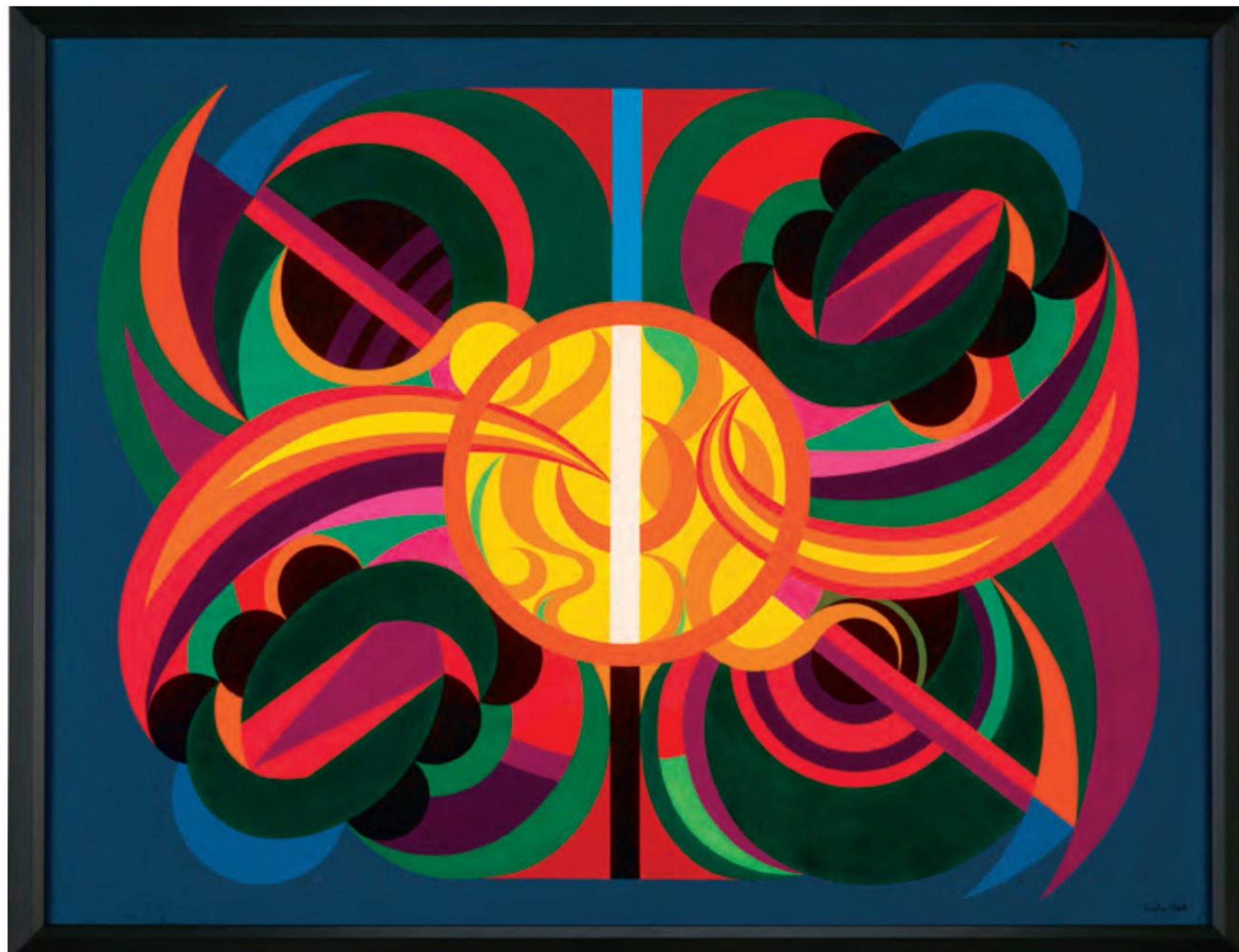
Canvas: 17³/₄"h x 17³/₄"w | Frame: 22"h x 22"w

#31-7832 | \$228,500



Scan to view
the dossier





AUGUSTE HERBIN

1882-1960 | French

Composition sur le nom Herbin

Dated 1942 | Oil on canvas

Signed and dated "Herbin 1942" (lower right)

Sharp-edged, dynamic forms and electrifying colors coalesce in this vibrant painting by pioneering French modernist Auguste Herbin. This work was made in the same pivotal year that Herbin developed his important "alphabet plastique," a synergistic visual language of color and form. Though his process was highly cerebral, the brilliant hues and shapes of *Composition sur le nom Herbin* radiate an alluring energy.

Herbin famously experimented and mastered a variety of styles throughout his early career, including Post-Impressionism, Fauvism and Cubism. The height of his artistic expression culminated in his co-founding of the important Abstract-Création group in Paris in the 1930s. Today Herbin's highly distinctive abstract works can be found at important museums including the Centre Pompidou in Paris and the Museum of Modern Art in New York, and an important retrospective of his work is happening at the Musée de Montmartre in Paris.

Canvas: 35¹/₈"h x 45³/₄"w | Frame: 37⁵/₈"h x 48⁵/₈"w

#31-6836 | \$168,500



Scan to view
the dossier







GIL ELVGREN

1914-1980 | American

Partial Coverage

Circa 1956 | Oil on canvas
Signed "Elvgren" (lower right)

Pinning the viewer with her flirtatious grin, this scantily clad beauty displays the trademark mischievous and light-hearted sensuality for which American artist Gil Elvgren was so beloved. *Partial Coverage* was originally published in the 1956 Brown & Bigelow calendar, giving the viewer a glimpse into a bygone American era with its nostalgic glamour and tantalizing charm.

Considered to be the greatest pin-up artist in history, Elvgren and his iconic illustrations have become an irreplaceable facet of the American artistic landscape. Most of his work was done for the famed Brown & Bigelow, *The Saturday Evening Post* and *Good Housekeeping*. After several successful commissions from the retail giant Louis F. Dow Calendar Company, Elvgren quickly became one of the most respected and successful commercial artists of his generation.

Canvas: 30¹/₈"h x 24¹/₈"w | Frame: 33³/₄"h x 27⁷/₈"w

#31-7228 | \$149,850



Eloqum

BEJEWELLED & BESPOKE

An opulent celebration of world renowned designers and one-of-a-kind gemstones, M.S. Rau's collection of jewelry is an astounding trove of rare finds and flawless craftsmanship. From Burma rubies and Brazilian Paraibas to the unmatched designs of Tiffany & Co. and Cartier, this carefully curated selection stands a cut above the rest.




Burma Ruby & Golconda Diamond Bypass Ring
AGL and GIA Certified | 

This ring pairs two exceptionally rare gems working together in perfect harmony. The stunning, unheated 5.70-carat Burma ruby and the remarkable Type IIa Golconda diamond are individually the finest of their kind, coalescing here into a uniquely legendary duo.

Burma ruby: 5.70 ct. | Golconda diamond: 4.54 ct.
Diamonds: 1.50 ctw. | Platinum

#31-8545 | \$1,485,000



Scan to see
videos of jewelry
with this  icon



Salavetti Ruby Necklace

GIA Certified Untreated | Salavetti Certificate | ✚

Crafted by the esteemed Italian jeweler Salavetti, this necklace features over 57 carats of brilliant cut rubies, embodying timeless style. Certified as free from any treatment, each ruby is nature-made and perfectly matched in saturation and hue, showcasing the masterful work of this revered designer.

Rubies: 57.99 ctw. | Diamonds: 8.02 ctw.
16" length | 18K white and yellow gold

#31-7527 | \$498,500



Mozambique Pigeon's Blood Ruby Ring

GRS Certified | ✚

Mozambique ruby: 7.05 ct. | Diamonds: 1.50 ctw.
18K yellow gold and platinum

#31-7534 | \$348,500



Pink Sapphire Ring

CDS Certified Untreated |

Pink sapphire: 4.03 ct. | Diamonds: 0.82 ctw.
Platinum

#30-7936 | \$54,500



Teal Sapphire Ring

AGL Certified Untreated |

Sapphire: 4.03 ct. | Diamonds: 2.97 ctw.
Platinum

#31-7432 | \$58,500



Multi-Color Sapphire & Diamond Bracelet

Sapphires: 43.49 ctw. | Diamonds: 2.29 ctw.
18K yellow gold

#31-8533 | \$78,500



Scan to see
videos of jewelry
with this icon



Ceylon Sapphire Earrings by Oscar Heyman

GRS Certified |

At the heart of these striking Oscar Heyman earrings are two royal blue Ceylon sapphires, together weighing an impressive 10.60 carats. Renowned for their unrivaled coloration, luminous brightness and exceptional transparency, Ceylon sapphires are among the most coveted gemstones in the world.

Ceylon sapphires: 10.60 ctw. | Diamonds: 3.73 ctw.
Platinum

#31-5562 | \$168,500



Tiffany & Co. Art Deco Sapphire & Diamond Watch


Signed "Tiffany & Co." |

Sapphires: 12.00 ctw. | Diamonds: 5.50 ctw.
Circa 1920 | 7" length | 12mm case | Platinum

#31-8548 | \$88,500




Umbalite Garnet Ring

GIA Certified | 

Umbalite garnet: 26.50 ct. | Diamonds: 1.86 ctw.
Platinum

#31-7434 | \$64,500



Cartier Tutti Frutti Lovers' Bench Brooch
Signed "Cartier Paris" | 

Circa 1945

$\frac{3}{4}$ " length x $1\frac{1}{2}$ " width | 18K yellow gold

#31-8229 | \$29,850


Fire Opal Ring by Oscar Heyman

DSEF Certified | 

Fire opal: 7.79 ct. | Diamonds: 1.16 ctw.
18K yellow gold and platinum

#31-7384 | \$88,500



Scan to see
videos of jewelry
with this  icon



Tiffany & Co. Multi-Color South Sea Pearl Necklace
Signed "Tiffany & Co." | 

This exquisite South Sea pearl necklace showcases an astonishing color palette from lustrous whites and grays to deep golds. Each pearl, perfectly selected for its beauty and harmony, underscores Tiffany & Co.'s legacy of remarkable craftsmanship. Cultivated in the pristine waters surrounding Australia and Indonesia, these pearls are the pinnacle of natural beauty, requiring up to four years to reach their full splendor.

Pearls: 17-15mm each
27" length | Platinum clasp with diamonds
#31-8399 | \$148,500



Tahitian Pearl & Diamond Earrings
by Henry Dunay


Pearls: 15mm | Diamonds: 5.80 ctw.
1³/₅" length | Platinum
#31-4761 | \$78,000



Paraiba Tourmaline Ring
AGL Certified Untreated | 

Mozambique Paraiba tourmaline: 23.24 ct.
Diamonds: 2.84 ctw. | Platinum
#31-6783 | \$648,500



Green Paraiba Ring by Raymond Yard
Unheated | 

Mozambique Paraiba tourmaline: 3.65 ct.
Diamonds: 1.15 ctw. | Platinum
#31-7834 | \$44,850



Green Paraiba Ring by Raymond Yard
GIA, GRS and SSEF Certified Unheated | 

Mozambique Paraiba tourmaline: 4.60 ct.
Diamonds: 1.11 ctw. | Platinum
#31-7835 | \$78,500



Scan to see
videos of jewelry
with this  icon



Brazilian Paraiba Pendant
AGL and GRS Certified

This pendant necklace features an exceptionally rare neon blue 7.06-carat Brazilian Paraiba tourmaline, which quickly became one of the most sought-after gems in the world after its discovery in 1989. The pear-shaped gem showcases the mesmerizing bright blue-green hue “representative of the finest material that has ever been recovered from the Brazilian deposits,” as stated in its accompanying AGL appendix letter. Paraibas rarely exceed 3 carats, making this monumental gem a collector’s dream.

Paraiba tourmaline: 7.06 ct. | Diamonds: Approx. 5.00 ctw.
Platinum

#31-5376 | \$985,000

RARE FINDS

Each of the unique treasures in this section captures the spirit of the great ages in which they were made, from the delicate finesse of Art Nouveau to the resplendence of Meiji Japan. Finely crafted by a range of celebrated artisans and renowned firms, this collection of rarities is a testament to the lasting beauty of history.



French 18K Gold Opera Glasses

These exceptionally rare 18K gold antique opera glasses feature ornate engravings and a bespoke design, epitomizing the height of luxury. Complete in their original tortoiseshell case, these metamorphic glasses spring to life when their clasp is released. Circa 1860. 4³/₄"h x 5"w x 3"d.

#31-8532 | \$64,500

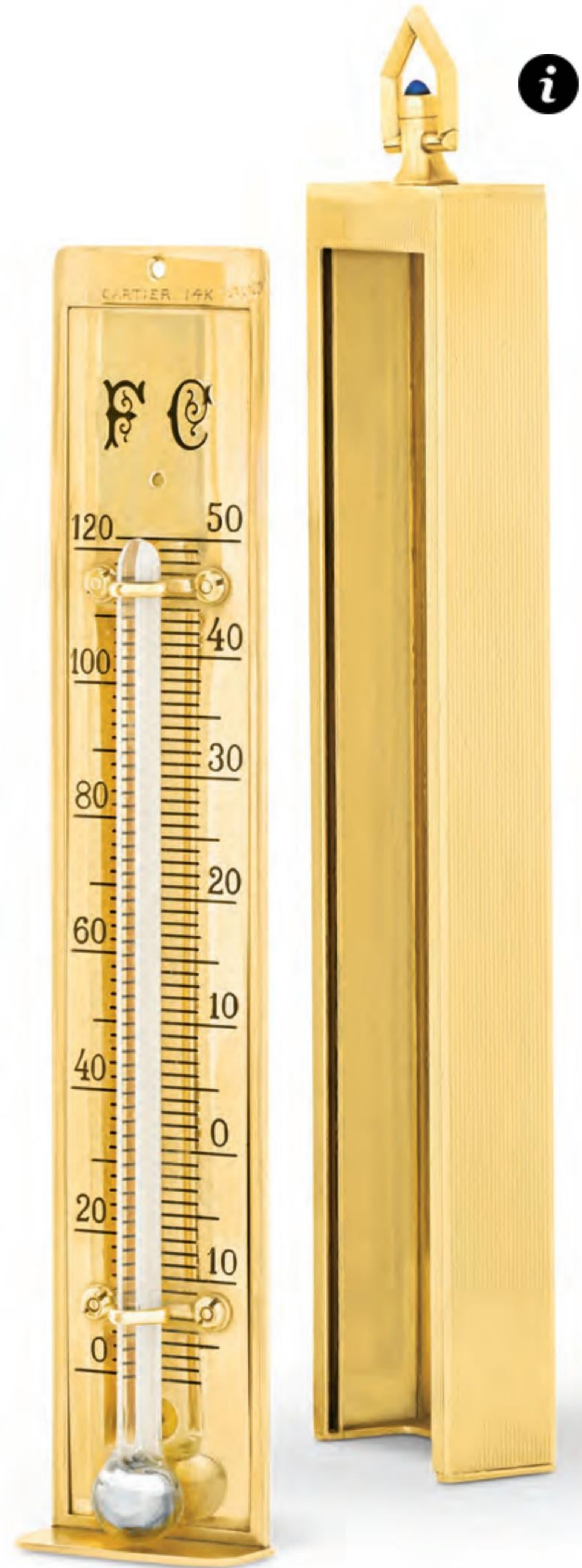


Scan to view
a video

Cartier 18K Gold Art Deco Pocket Watch

Housed in its custom gold case, this square timepiece epitomizes Cartier horology's originality and technical precision. The watch's gold shutters, inscribed with the French phrase "mystery act," smoothly swing open with a push of the crown. This coveted feature protects the dial's fine surface, artfully designed with bold Roman numerals and cobalt blue Breguet hands. Circa 1920. Dial marked "Cartier." 1⁵/₈" dia.

#31-8074 | \$29,850



Cartier 14K Gold Thermometer

This lustrous instrument features a sleek fluted case and scales for both Fahrenheit and Celsius. Thermometers from the renowned Cartier are rarely seen, serving as a reminder of the inventive scope of their luxurious designs. Marked "Cartier 14K." 5"h x 1"w.

#31-6253 | \$21,000



Loetz Lava Vase

This vase displays the *Crete* color variation of Loetz's iconic Phaenomen Genre 377 collection, unveiled at the Paris World Exhibition of 1900. Circa 1900. 8”h x 4½”w x 5”d.

#31-8296 | \$12,850



Loetz Candia Silberiris Tree Trunk Vase

This large vase is crafted in a sensuous, organic design with Loetz's signature luster. Circa 1900. 16½”h x 6⅝”dia.

#31-8298 | \$12,850



Loetz Phaenomen Vase

These fluid iridescent swirls are the trademark of Loetz's Phaenomen Genre 7993-1899. Circa 1898-99. Hallmarked with Loetz marks. 8”h x 5”dia.

#31-6847 | \$8,850



Camées Glass Vase by René Lalique

The Greco-Roman-inspired *Camées* pattern was designed by René Lalique in 1923 and discontinued in 1947, making it exceptionally rare and coveted. Signed "R. Lalique France." 10"h x 6" dia.

#31-7158 | \$22,850.

Green Sauterelles Vase by René Lalique

Designed in 1912, the *Sauterelles* grasshopper pattern highlights Lalique's love of bold forms and natural motifs. Circa 1912. Signed "R. Lalique France." 10⁵/₈"h x 10" dia.

#31-6713 | \$39,850





**Louis Comfort Tiffany Pastel
Favrile Glass Service**

This luminous service is an exceptional, opalescent example of Tiffany's famed Favrile blown glass. With a striking green hue and scalloped rims, the design exudes the fluid elegance that defined the age of Art Nouveau. 59 pieces. Circa 1920. Marked "100 L.C.T. Favrile."

#31-5636 | \$48,850





Tiffany Studios Lotus Pagoda Lamp

Louis Comfort Tiffany's leaded glass lamps are perhaps his most iconic creations. This monumental table lamp features the coveted *Lotus Pagoda* shade, accompanied by its original bronze base. Circa 1910. Shade and base stamped "Tiffany Studios/New York." 30 $\frac{1}{2}$ "h x 24 $\frac{1}{2}$ "dia.

#31-8426 | \$298,500



Alpine Glass Vase by Émile Gallé

Monumental in size and exceptional in artistry, this sand-polished cameo glass vase by Émile Gallé features a beautifully detailed alpine scene, an exceedingly rare motif from the famed master. Circa 1900. Signed "Gallé." 17 $\frac{1}{2}$ "h x 13"w x 6"d.

#31-6859 | \$49,850



Cameo Glass Table Lamp by Émile Gallé

This statuesque lamp features Gallé's whimsical *Marguerite* pattern delicately etched in varying layers of colored glass. When lit, the lamp's colors transform, emitting an enticing glow. Circa 1920. Signed "Gallé." 22½"h x 11¼"dia.

#31-8284 | \$64,500



Pagoda Lamp by Émile Gallé

The natural world and Japanese motifs coalesce in this rare Pagoda-shaped lamp, combining Gallé's favorite inspirations into a distinctive design. Circa 1900. Signed "Gallé." 10¼"h x 12¼"w x 3½"d.

#31-8285 | \$48,500





Monumental Minton Jardinière

This extraordinary centerpiece was crafted by the masters of majolica, Minton & Co. An ornate design at a grand scale, this jardinière is in pristine condition and a rarity on the market. Hallmarked 1856. 17½”h x 34½”w x 28”d.

#31-8539 | \$68,500



The monumental breadth of this jardinière spans nearly three feet.



The Royal Palace Pietre Dure Table

This exceptional pietre dure table was crafted for the Royal Palace of Holyroodhouse, the official residence of the British monarch in Scotland. Delicately inlaid with dozens of rare hardstones and set on a parcel-gilt walnut base, this table displays a richness befitting its royal provenance. Circa 1860. Stamped "V.R." for Victoria Regina and "G.R." for George Rex. 28⁵/₈"h x 28" dia.

#31-7257 | \$48,850

Meiji Gilt Bronze Birds on Driftwood Base

These lifelike fowl are magnificently rendered in gilt and silvered bronze with exquisite detail. The birds were crafted by the famed former sword maker, Ishiguro Masatsune, an esteemed artisan of the important metalworking family, Ishiguro. Circa 1890. Signed Masatsune. Overall: 58½”h x 23”w x 37”d.

#31-8424 | \$98,500



This statuesque sculpture stands almost five feet tall.



Japanese Lacquer Tray

Inlaid with gold, silver and mother-of-pearl, this intricately detailed lacquer tray reveals the mastery of Japanese craftsmen during the illustrious Meiji period. The design features the iconic *maki-e* motif of a cart before a towering mountain. Late 19th century. 2⁵/₈"h x 21¹/₄"w x 15³/₈"d.

#31-7131 | \$19,800

Silvered Bronze Cockerel by Takahashi Ryoun

Symbolizing fidelity and good fortune, this exquisite silvered bronze cockerel epitomizes the zenith of artistic achievement during the Meiji period. Late 19th century. Signed Ryoun. 11³/₄"h x 4"w x 6³/₈"d.

#31-8446 | \$14,850





Italian Baroque Iron Floor Safe

This exceptionally rare antique Italian iron safe utilizes a multi-key locking mechanism with hidden keyholes, offering the highest level of 18th-century security. Please watch the video below to reveal the ingenious complexity of this Baroque safe. Circa 1700. 63³/₈"h x 36³/₄"w x 23³/₈"d.

#31-8049 | \$124,500



Scan to view
a video



**Russian Imperial Kalgan
Jasper Tazza**

This impeccably carved tazza is formed of highly rare Kalgan jasper and hails from the famed Imperial Lapidary Manufactory in Ekaterinburg, founded by Czar Peter the Great in 1721. Signed and dated 1888. 19⁵/₈"h x 10¹/₄"dia.

#31-8238 | \$148,850



Blyberg Porphyry Column

The rarest and most coveted variety of this prized stone, Blyberg porphyry displays an astounding purple hue and was used in ancient times to indicate nobility and status. Circa 1870. 43⁵/₈"h x 12"dia.

#31-3747 | \$29,850



Month-Going Long Case Regulator Clock by Breguet

This clock embodies the mechanical excellence and sleek design of Breguet's famed Art Deco output. It was included in the important 1991 auction "The Art of Breguet" in Geneva, which showcased only the most exceptional Breguet timepieces. Originally crafted for Nicholas Pusey, the famous president of Harvard University, this clock is the pinnacle of horological refinement. Circa 1931. 68¹/₈"h x 19¹/₈"w x 10³/₄"d.

#31-8125 | \$128,500



Scan to view
a video



World Time Clock by Patek Philippe

Modeled after the firm's revered 5110 World Time wristwatch, this large wall clock was made exclusively for display in Patek Philippe official retail stores and never offered for sale to the public. Circa 2000. Marked "Patek Philippe / Geneve." 15¹/₂"dia.

#31-8526 | \$68,500



**York Minster Cathedral Clock
by J. Smith & Sons**

This marvelous Victorian brass skeleton clock depicts the majestic York Minster Cathedral in York, England. Featuring its intricate two-train chain fusée mechanism and an engraved and silvered chapter ring, this is an astounding specimen of English clockmaking by J. Smith & Sons of Clerkenwell, London. Circa 1880. 18”h x 13½”w x 10”d.

#31-7266 | \$54,500



Scan to view
a video



Rare Jockey Scale by Leuchars & Son

This handsome Victorian jockey scale is in pristine working condition and retains its original brass weights that would have determined a jockey's weight. Crafted of intricately carved mahogany and featuring a tufted leather seat, this is a visually stunning historic object. 19th century. Stamped "Leuchars & Son." 36¹/₄"h x 35¹/₂"w x 21³/₄"d.

#31-7998 | \$35,850





**Fossiliferous Crinoid Marble
Sculpture of Wild Horses**

This monumental sculpture transforms highly rare fossiliferous crinoid marble into a galloping herd of horses. Crinoid marble is a form of sedimentary rock containing a visually striking array of fossilized marine animals that flourished nearly 300 million years before dinosaurs. This unique work of art marries ancient and modern history. 20th century. 19”h x 39”w x 20”d.

#31-7059 | \$58,500



i



i



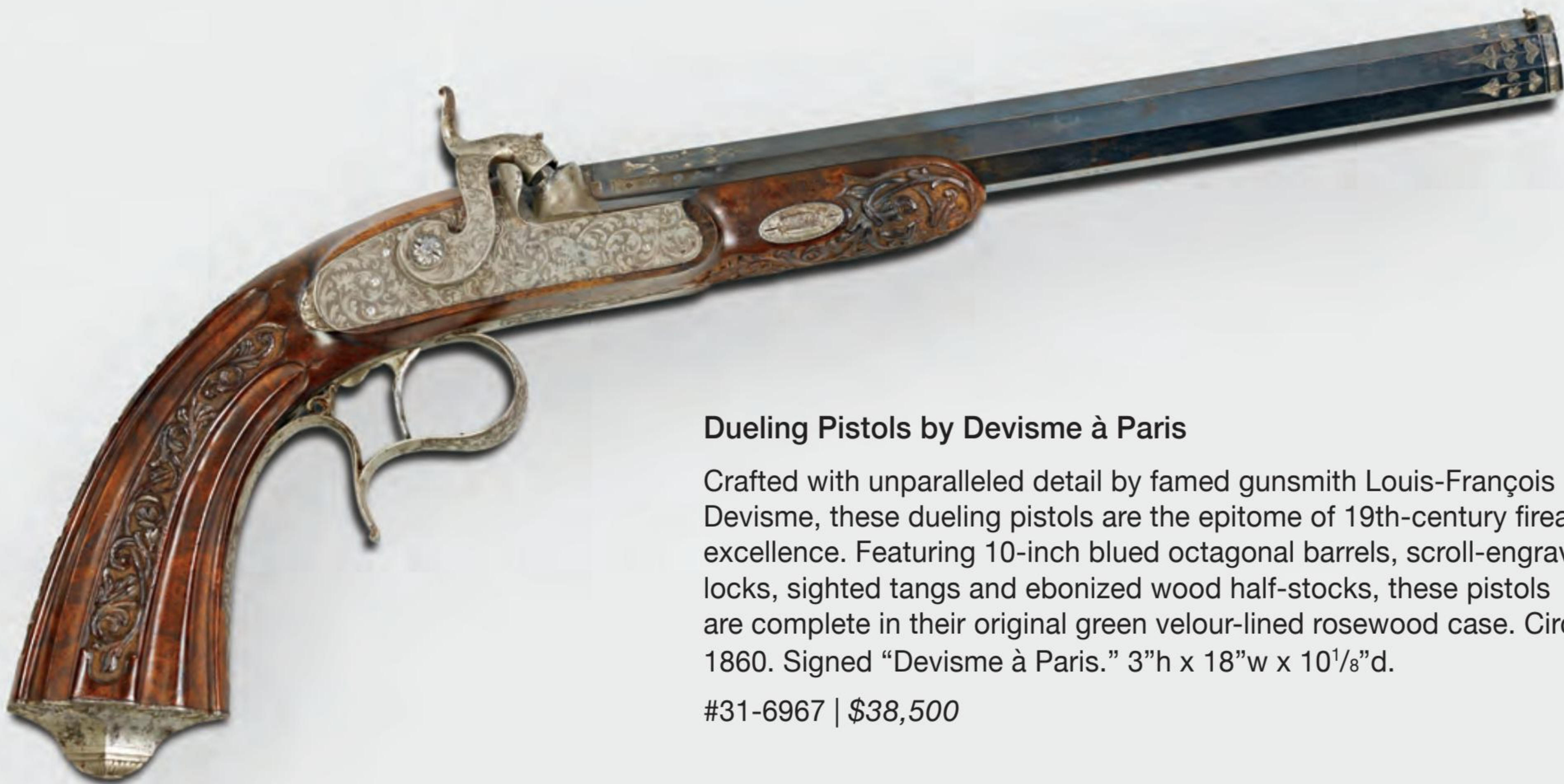
Japanese Yari Blades

These two collections of exquisite *yari*, or traditional blades, showcase the excellence of classic Japanese weaponry. Meticulously crafted, the blades reflect the austere beauty inherent to Japanese arms and warfare. 19th century. Signed "Made in Japan." Highest *yari*: 100"h x 1 1/2"dia. Stands: 42"h x 33"w x 16"d.

#31-8445 | \$44,500 | #31-8433 | \$44,500



Scan to view a video



Dueling Pistols by Devisme à Paris

Crafted with unparalleled detail by famed gunsmith Louis-François Devisme, these dueling pistols are the epitome of 19th-century firearm excellence. Featuring 10-inch blued octagonal barrels, scroll-engraved locks, sighted tangs and ebonized wood half-stocks, these pistols are complete in their original green velour-lined rosewood case. Circa 1860. Signed "Devisme à Paris." 3"h x 18"w x 10¹/₈"d.

#31-6967 | \$38,500



French Malachite Backgammon Board

Handcrafted of malachite, gilt brass and dyed leather, this favorite household game is a unique treasure. This objet d'art once belonged to the renowned Sir Arthur Gilbert, whose famed collection of hardstone art now belongs to the Victoria & Albert Museum, London. 20th century. 4”h x 23½”w x 14⅞”d.

#31-6695 | \$34,500



Scan to view a video



Marquetry Games Table by Ralph Turnbull

This stunning games table was crafted by celebrated Scottish furniture maker Ralph Turnbull who established his preeminent firm in Jamaica in the early 19th century. Featuring an array of beautiful Caribbean and South American woods, this table showcases the marriage of classic English furniture design with exotic materials exclusive to the Caribbean, a hallmark of Turnbull's creations. Signed with Turnbull trade label. Circa 1830. 29⅛”h x 30⅛”w x 18⅞”d.

#31-2820 | \$34,500





The Mills Chicago Upright Slot Machine

This impressive and highly rare coin-operated slot machine was the most iconic top-of-the-line model ever made by the Mills Novelty Company. First crafted in 1899, the *Chicago* is a six-way machine, meaning it offers six ways to wager and pays out rewards ranging from 10 cents to two dollars. This fully restored deluxe model is also visually stunning, featuring its towering finely carved oak case embellished with ornate nickel-plated accents. Circa 1900. 66”h x 28³/₄”w x 17¹/₂”d.

#31-3633 | \$54,500



i

Ormolu Cave à Liqueur by Baccarat

This doré bronze and glass cave à liqueur displays a rare oriental design by the renowned French cristallerie Baccarat. The 4 decanters and 16 glasses are intricately etched with their foliate motif and are housed in their unique palanquin-shaped case. Circa 1870. 15³/₈"h x 14³/₈"w x 13³/₄"d.

#31-3641 | \$28,850



i



Regency Double-Magnum Bottle Holder

Crafted of luxurious mahogany and adorned with a brass holder for easy transport, this caddy can hold two double-magnum wine bottles. Early 19th century. 9"h x 14⁵/₈"w x 8¹/₂"d.

#31-6000 | \$14,850



George III Mahogany Wine Cellarettes

This rare pair of late Georgian wine cellarettes epitomizes the elegance of the Neoclassical aesthetic. They are crafted of fine mahogany carved in a beautiful serpentine pattern, with ormolu, clawfoot and lion's head accents that were the high style of Georgian-era furniture.

Early 19th century. 25”h x 27½”w x 21”d.

#31-5245 | \$64,500







Tiffany & Co. English King Gilded Flatware Service

This timeless complete flatware set includes place settings for 12, housed in its original Tiffany & Co. fitted chest. First introduced by Tiffany in 1885, the *English King* design blends the traditional King's pattern in English silver with subtle American flair, making it one of the most classic and popular patterns ever produced by the innovative firm. Marked "Tiffany & Co." Circa 1910.

Chest: 6³/₄"h x 31¹/₂"w x 20³/₈"d.

This 216-piece service includes:

24 luncheon knives
24 luncheon forks
12 entrée knives
12 fish knives
12 serrated fruit knives
12 tablespoons
12 butter knives

12 fish forks
12 entrée forks
12 gumbo spoons
12 teaspoons
12 oyster forks
12 sorbet forks
12 ice cream spoons
12 coffee spoons
12 pastry forks

#31-6826 | \$98,500



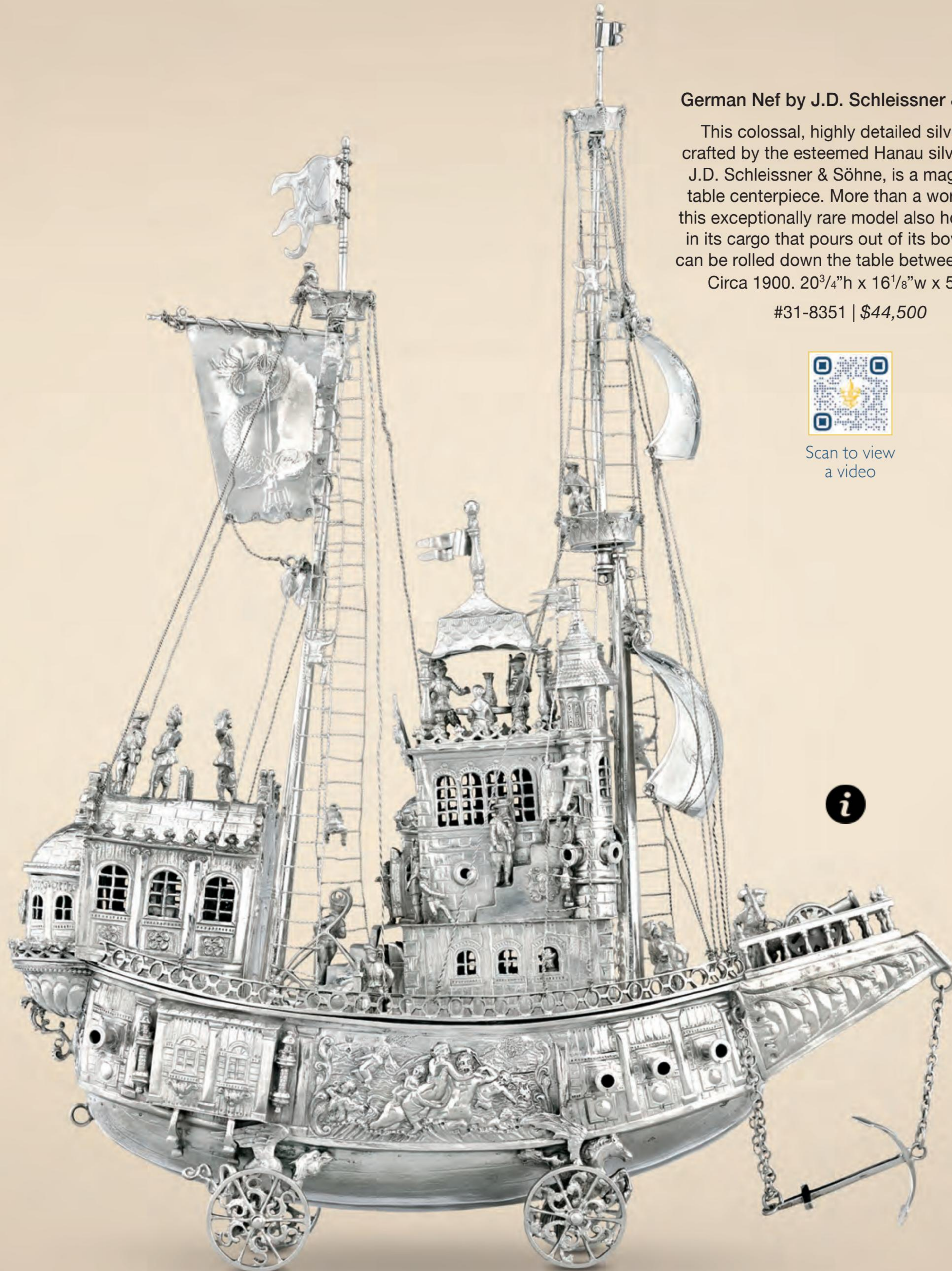
German Nef by J.D. Schleissner & Söhne

This colossal, highly detailed silver nef, crafted by the esteemed Hanau silversmiths J.D. Schleissner & Söhne, is a magnificent table centerpiece. More than a work of art, this exceptionally rare model also holds wine in its cargo that pours out of its bow, and it can be rolled down the table between guests. Circa 1900. 20³/₄"h x 16¹/₈"w x 5¹/₄"d.

#31-8351 | \$44,500



Scan to view
a video





Glass and Silver-Gilt Wine Coolers by Hunt & Roskell

These splendid cut glass and silver-gilt vessels are beautifully adorned with scrolling grapevines, evoking ideas of revelry and bacchanalia perfect for their function as wine coolers. The delicate foliate pattern of the silver-gilt mounts embodies the epitome of British silver craftsmanship, made by the celebrated Hunt & Roskell firm, helmed at the time by Paul Storr's protégé, John Samuel Hunt. Hallmarked 1846. 13³/₄"h x 9¹/₂"dia. each.

#31-8362 | \$88,500



Battle of Trafalgar Bicentennial Silver-Gilt Casket

This commemorative casket celebrates the bicentenary of the Battle of Trafalgar, the most important battle in naval history. One of only five ever made, this exquisite objet d'art features hand-painted enamels of Admiral Horatio Nelson and a scene from the famed battle. Its interior is lined with oak directly from the HMS *Victory* and displays an engraved plaque transcribing Nelson's illustrious naval campaigns. Signed and dated 2005. 5”h x 10”w x 7”d.

#31-7305 | \$48,850

Silver Cannon Lighter by Gibson & Langman

This silver cannon and carriage table lighter would have made a lavish centerpiece for a refined Victorian dinner table. Merging elegance and practicality, the lighter features four fully functional wheels for rolling to fellow partygoers across the table. Hallmarked London 1893. 5³/₄”h x 5⁷/₈”w x 22”d.

#31-7135 | \$29,850



Pair of Silver Candelabra by Thomas Bradbury

Based on the early 17th-century models of Dutch and English ball chandeliers, these monumental candelabra make a dramatic statement. This pair was specially commissioned in 1930 for a Virginia couple's silver wedding anniversary gift, epitomizing the artistic height of Thomas Bradbury & Sons' output. Hallmarked Sheffield 1930. 29¹/₄"h x 19"dia.

#31-6555 | \$88,500







The Czar Alexander III Imperial Silver Punch Set

This exquisite silver punch set was crafted for Czar Alexander III, who gifted it to the pioneering British Captain Joseph Wiggins in recognition of his important expedition along the Yenisei River. Created by the renowned House of Sazikov, the oldest silversmith and jewelry firm in Russia, this marvelous set is delicately engraved with Slavic proverbs and laudatory inscriptions dedicated to Wiggins, who bestowed it to the Royal Geographical Society upon his death in 1905.

Hallmarked 1874-75. Tray: 9”h x 19⁷/₈”dia.

#31-8237 | \$498,000

WE ARE EXPANDING
M.S. Rau Aspen Pop-up Gallery

Open June-September 2024
Downtown Aspen, CO



CENTURIES of SPLENDOR

FINE ART, JEWELS & RARITIES



Panther Brooch by Oscar Heyman
Stamped OH |

Diamonds: 8.50 ctw.
Sapphires: 1.60 ctw. | Emeralds: 0.04 ctw.
18K gold | 2 1/4" length
#31-8055 | \$58,500



BUY WITH CONFIDENCE

Expertise.

Everything in our gallery has been thoroughly researched and expertly vetted for quality and authenticity.

On Approval.

Many items can be sent to you on approval so you can view them in your home and ensure the perfect fit.

125% Guarantee.

Each object we sell is backed by our 125% Guarantee, which offers 5% interest annually for up to five years.